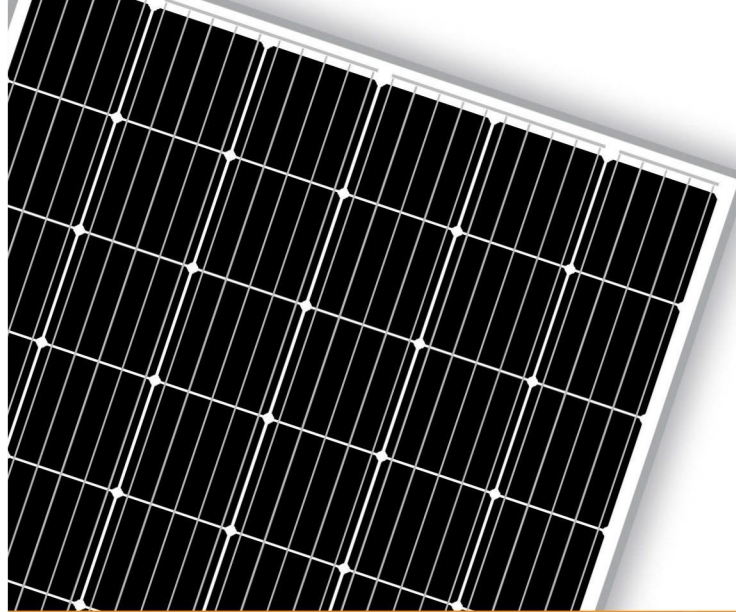
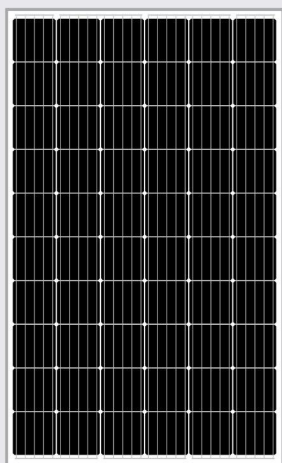




RESUN SOLAR ENERGY CO.,LTD.



WWW.RESUNSOLAR.COM



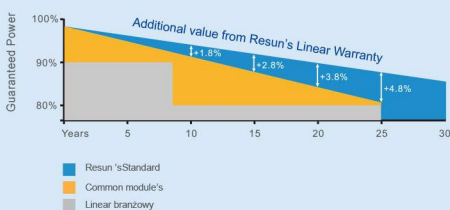
60 Cells
PERC Monocrystalline

300-320 W
Power output

19.67%
The highest efficiency

0~+5W
Tolerance

0.5% Annual Degradation
over 30 years



LINEAR PERFORMANCE WARRANTY
12 Product Warranty / 30 year Linear Power Warranty

RS6C-M

RS6C-M is a robust solar module with 60 PERC solar cells. These modules can be used for on grid solar applications. Our meticulous design and production techniques ensure a high yield, long-term performance for every module produced. Our rigorous quality control and in-house testing facilities guarantee Resun Solar's modules meet the highest quality standards possible.



High module conversion efficiency (up to 19.67%), through superior manufacturing technology



Guaranteed 0~+5W positive power output tolerance ensures high reliability



Anti-reflective, hydrophobic coating improves light absorption and reduces surface dust



Excellent performance under low light environments (mornings, evenings and cloudy days)



Suitable for harsh environments, such as coasts, deserts and lakes withstand high level of wind loads (2400pa) and snow loads (5400pa)

Full range of products and certification systems

ISO9001 TUV PID-FREE CE IEC61215/ 61730/ 61701/62716

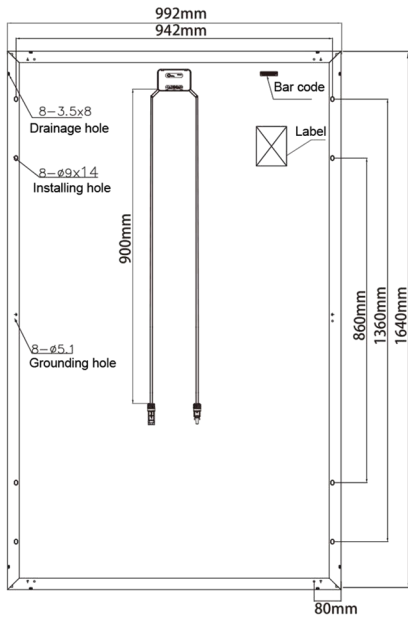


RS6C-M

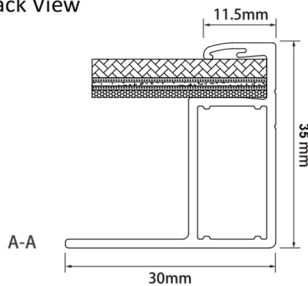


GLOBAL PROFESSIONAL PV PRODUCTS INTEGRATED SOLUTIONS SUPPLIER

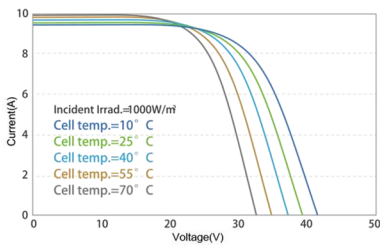
Dimensions of PV Modules Unit: mm



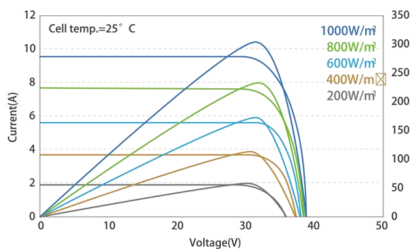
Back View



U-I Curve at Different Temperature (300W)



U-I/P-U Curve at Different Irradiation (300W)



ELECTRICAL DATA (STC)

Rated Power in Watts-Pmax(Wp)	300W	305W	310W	315W	320W
Open Circuit Voltage-Voc(V)	39.85V	40.08V	40.48V	40.59V	40.94V
Short Circuit Current-Isc(A)	9.62A	9.73A	9.77A	9.88A	9.94A
Maximum Power Voltage-Vmp(V)	32.90V	32.95V	33.34V	33.58V	33.80V
Maximum Power Current-Imp(A)	9.12A	9.27A	9.30A	9.38A	9.47A
Module Efficiency (%)	18.44%	18.74%	19.05%	19.36%	19.67%

STC: Irradiance 1000W/m², Cell Temperature 25°C, Air Mass AM1.5 according to EN 60904-3.

ELECTRICAL DATA (NOCT)

Rated Power in Watts-Pmax(Wp)	239W	243W	232W	236W	240W
Open Circuit Voltage-Voc(V)	39.42V	39.54V	38.46V	38.62V	38.83V
Short Circuit Current-Isc(A)	7.83A	7.94A	7.92A	8.00A	8.06A
Maximum Power Voltage-Vmp(V)	32.05V	32.15V	31.26V	31.46V	31.77V
Maximum Power Current-Imp(A)	7.46A	7.56A	7.42A	7.49A	7.54A

NOCT: Irradiance 800W/m², Cell Temperature 20°C, Wind Speed 1 m/s.

MECHANICAL DATA

Solar Cells	Mono PERC 156.75x156.75mm, 5 Bus Bars
Cell Configuration	60 Cells (6x10)
Module Dimensions	1640x992x35mm
Weight	19KGS
Front Cover	3.2mm tempered glass
Frame Material	Anodized Aluminium Alloy
J-Box	IP67, 3 Diodes
Cable	4mm ² (IEC)/12AWG(UL),900mm
Connector Standard	MC4 or MC4 Comparable
Packing	31pcs/pallet + 2pcs/carton

TEMPERATURE & MAXIMUM RATINGS

Nominal Operating Cell Temperature (NOCT)	45°C±2°C
Temperature Coefficient of Voc	-0.32%/°C
Temperature Coefficient of Isc	0.05%/°C
Temperature Coefficient of Pmax	-0.39%/°C
Operational Temperature	-40~+85°C
Maximum System Voltage	1000V(IEC)/600V(UL)
Max Series Fuse Rating	15A
Limiting Reverse Current	15A

Package Details

	40HQ	20GP
Modules per container	952pcs	372pcs
Package	31pcs/pallet, 2pcs/carton	31pcs/pallet
Package Number	28pallets + 42cartons	12pallets